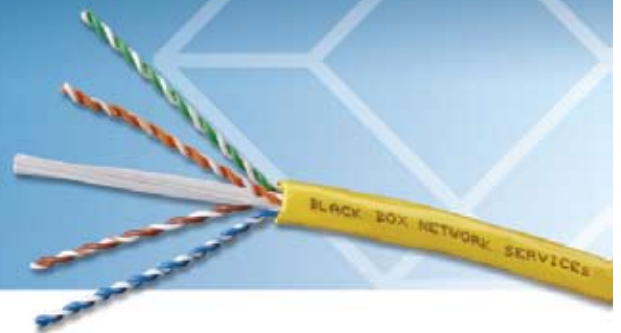


Black Box<sup>®</sup> GigaTrue<sup>®</sup> CAT6 550-MHz Solid Bulk Cable (UTP)

Our 550-MHz cable exceeds CAT6  
with plenty of headroom.

**CAT6****Features**

- Guaranteed to exceed ANSI/TIA/EIA-568-B.2-1 CAT6 and ISO/IEC 11801 Class E requirements.
- Cable is marked in two-foot increments.
- Easy to dispense pull box.
- Designed for high-end applications.
- Polyester rip cord.
- Double Diamond™ Warranty: Lifetime

**Applications**

- High-performance network applications for:
  - Backbone
  - Floor-to-floor backbone
  - Horizontal cabling to desktop
  - Active zone cabling
- 100-Mbps TP-PMD
- 155-Mbps ATM
- Gigabit Ethernet
- WideBand™ Ethernet
- High-performance digital video applications

**Compliance**

- ICEA S-90-661 (Category 5X-160)
- ISO/IEC 11801 Class E
- ANSI/TIA/EIA-568-B.2-1
- PVC: CMR, UL® 1666; Plenum: CMP, NFPA 262

**Specifications**

Characteristic Impedance: 1–550 MHz:  $100 \pm 15$  ohms  
Conductor: 23 AWG, solid, bare copper  
Delay Skew (Maximum): 25 ns/100 m  
Input Impedance: 1–250 MHz:  $100 \pm 15$  ohms  
Return Loss (Minimum): 20.1 dB @ 100 MHz; 14.9 dB @ 550 MHz  
Velocity of Propagation (Minimum): 62.2% @ 550 MHz

**The backbone of your channel solution.**

GigaTrue<sup>®</sup> 550 CAT6, 550-MHz Solid Bulk Cable (UTP) is designed for use in high-performance data and video networks and other high-speed, high-bandwidth applications. It offers a great deal of headroom over the specification, giving you lots of room for expansion.

**Easy pull.**

This cable comes in easy-to-use pull-boxes and features the Accu-Pull Measuring System. The cable is marked in descending two-foot increments so you always know exactly how much cable is in the box.

**Construction facts.**

The PVC cable features flame-retardant PVC jacket and polyolefin insulation. The plenum cable features a Flexguard flame-retardant PVC jacket and FEP filler insulation.

**Guaranteed for life.**

To fully back up our claims of quality, we guarantee—for life—this cable and all the products in our GigaTrue line.

**Proven performance.**

You can be assured of proven performance as Black Box has its products independently tested by InterTek Testing Services/ETL Semko, Inc. An Intertek inspector visits Black Box once a quarter and randomly selects cable and cabling products for testing.

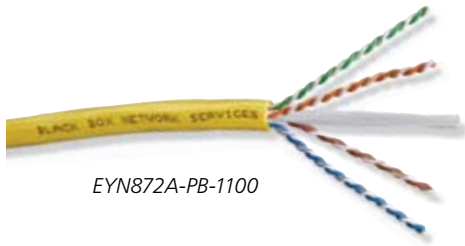
The GigaTrue CAT6 Solid Bulk Cable is ETL Verified at the component level. The ETL Verified Program verifies that the cable conforms to the applicable industry standards.

The GigaTrue CAT6 Channel (4 point, 100 meters), consisting of bulk cable, patch cable, jacks, patch panels, and wiring block, is tested and verified in a LAN environment under Intertek's Cabling System Channel Verification Program. This ensures that the system is of the highest quality and performs to the latest industry specifications.

For the latest test results and specifications, contact us at 724-746-5500 or go to [blackbox.com](http://blackbox.com).



## GigaTrue® CAT6 Channel Solution



EYN872A-PB-1100

## Buyer's Guide | GigaTrue CAT6 550-MHz Solid Bulk Cable (UTP)

4-Pair, 1000-feet (304.8-m)		
Color	Catalog No., PVC Riser	Catalog No., Plenum
Blue	EYN870A-PB-1000	EYN871A-PB-1000
Yellow	EYN872A-PB-1000	EYN873A-PB-1000
White	EYN874A-PB-1000	EYN875A-PB-1000
Gray	EYN876A-PB-1000	EYN877A-PB-1000
Green	EYN878A-PB-1000	EYN879A-PB-1000
Red	EYN868A-PB-1000	EYN869A-PB-1000
Orange	EYN866A-PB-1000	EYN867A-PB-1000
Black	EYN880A-PB-1000	EYN881A-PB-1000

## Related Products



EVNSL641



FMT630-R2



JPM612A-R6

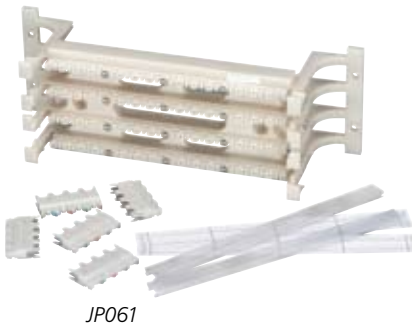
## GigaTrue CAT6 550-MHz Patch Cable (UTP)

Snagless Boots, Stranded, 24 AWG, 4-Pair, PVC, Straight-Pinned	
Length	Catalog No.
1-ft. (0.3 m)	EVNSL6XX-0001
2-ft. (0.6 m)	EVNSL6XX-0002
3-ft. (0.9 m)	EVNSL6XX-0003
4-ft. (1.2 m)	EVNSL6XX-0004
5-ft. (1.5 m)	EVNSL6XX-0005
6-ft. (1.8 m)	EVNSL6XX-0006
7-ft. (2.1 m)	EVNSL6XX-0007
10-ft. (3.0 m)	EVNSL6XX-0010
15-ft. (4.5 m)	EVNSL6XX-0015
20-ft. (6.0 m)	EVNSL6XX-0020
25-ft. (7.6 m)	EVNSL6XX-0025
30-ft. (9.1 m)	EVNSL6XX-0030
50-ft. (15.2 m)	EVNSL6XX-0050
100-ft. (30.4 m)	EVNSL6XX-0100
Custom Lengths	EVNSL6XX

To order, replace the "XX" with the color number.  
 Gray = 40      Yellow = 44      Purple = 48  
 Blue = 41      Beige = 45      Orange = 49  
 Green = 42      Pink = 46      White = 50  
 Red = 43      Black = 47

## GigaTrue CAT6 Jacks

Color	Catalog No.
Blue	FMT630-R2
Black	FMT631-R2
Ivory	FMT632-R2
Gray	FMT633-R2
Green	FMT634-R2
Office White	FMT635-R2
Orange	FMT636-R2
Red	FMT637-R2
White	FMT39-R2
Yellow	FMT30-R2



JP061

## CAT6 Wiring Block Kit

Catalog No.
JP061

## GigaTrue CAT6 Patch Panels

Universal Wiring	Catalog No.
24-Port, 1.75"H, 1U	JPM610A-R6
48-Port, 3.5"H, 2U	JPM612A-R6
96-Port, 7.0"H, 4U	JPM614A-R6

All include cable ties and mounting hardware.



WPT480

## GigaStation 2 Wallplates

	Ivory	Office White	White
1-Port, Single-Gang	WPT454	WPT456	WPT458
2-Port, Single-Gang	WPT460	WPT462	WPT464
3-Port, Single-Gang	WPT466	WPT468	WPT470
1-Port, Single-Gang	WPT472	WPT474	WPT476
6-Port, Single-Gang	WPT478	WPT480	WPT482
9-Port, Dual-Gang	WPT484	WPT486	WPT488
12-Port, Dual-Gang	WPT490	WPT492	WPT494

© Copyright 2010. Black Box Corporation. All rights reserved.  
 Black Box®, the Double Diamond logo, and GigaTrue® are registered trademarks, and Double Diamond™ is a trademark, of BB Technologies, Inc. Any third-party trademarks are acknowledged to be the property of their respective owners.

FREE, 24/7 Tech Support and ordering: 724-746-5500 or blackbox.com.