

USB↔USB Data Transfer

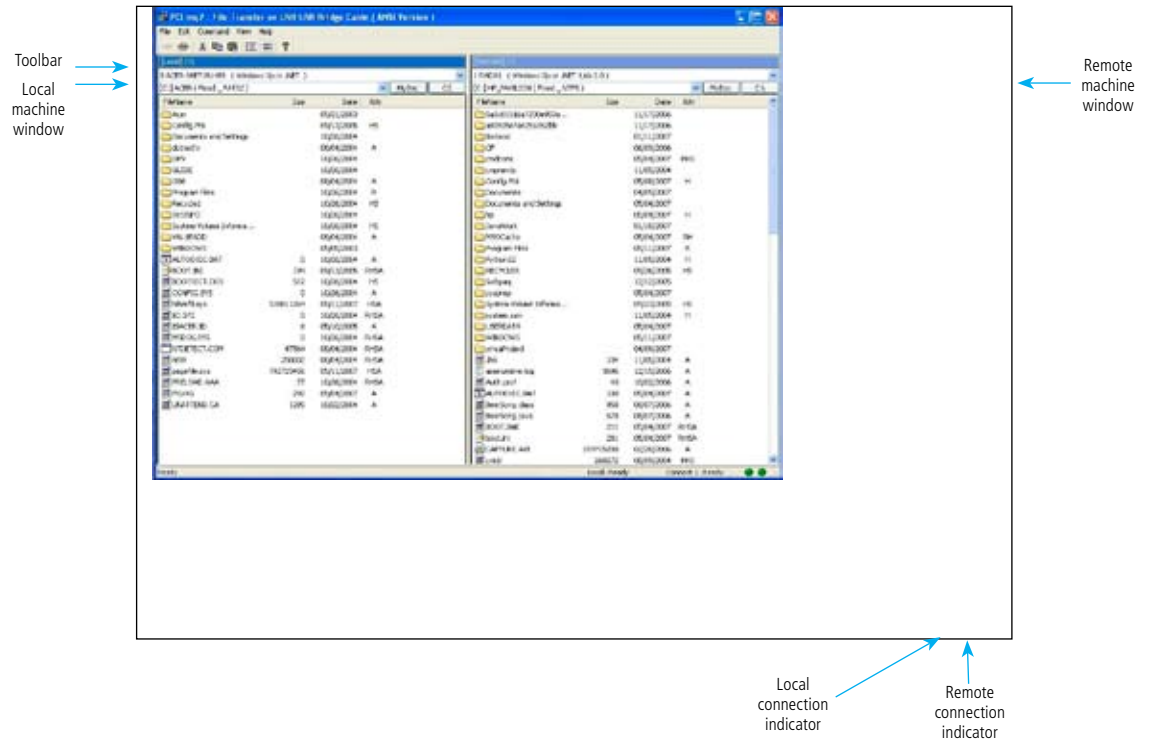
Transfer files directly  
between computers —  
through their USB ports.



## FEATURES

- » Perfect for use with notebook or laptop PCs.
- » Requires a 133-MHz Pentium or better CPU, one USB 1.1 or 2.0 port, and Windows 98 SE, Me, XP, or 2000.
- » Transfer files at speeds up to 480 Mbps.
- » Includes an integral pigtail cable.
- » Application software is easy to use.

The USB-LinQ File Manager appears on your screen when it detects both the local and the remote host.



## OVERVIEW

Do you have two computers that need to communicate with each other? Say good-bye to slow serial or parallel port speeds. Try this single-cable solution to your data communications connectivity problems. It uses an ASIC USB chip to communicate between two USB hosts—at speeds up to 480 Mbps! It complies with USB Version 2.0 and is backward compatible with USB Version 1.1.

An integral 6-foot (1.8-m) pigtail cable is attached to the [USB↔USB Data Transfer](#). Attach the Type A connector end of this cable to your computer's USB Type A port, then plug the Type A connector on the other end into the second computer's USB Type A port.

To transfer data, your system must have at least an Intel® compatible Pentium® 133-MHz CPU or higher, one standard USB port

(4-pin), and a compatible operating system (Windows® 98 SE/Me/XP/2000). Drivers for these operating systems are on the included CD-ROM. Transferring data is easy—just drag and drop files.

The [USB↔USB Data Transfer](#) supports USB power management, which makes it ideal for use with mobile PCs such as notebooks.

The included application software (called USB-LinQ) features a user interface that's similar to Windows Explorer. File transfer is as easy as drag-and-drop. And a handy print function is ideal for remote files.

The software also includes the remote wakeup function. Use this feature to return the remote computer to normal operating mode from suspend mode. Or disable the remote's suspend function completely. You choose the option that's best for your system.



## TECH SPECS

**Data Transfer Speed** — Up to 480 Mbps  
**Hardware Requirements** — IBM® PC or compatible that supports USB; Intel compatible Pentium 133-MHz CPU or higher  
**Software Requirements** — Windows 98 SE/Me/XP/2000  
**Standards** — USB 2.0  
**Connectors** — (2) USB Type A  
**Indicators** — (2) Status LEDs: (1) for local PC, (1) for remote PC  
**Power** — From the interface  
**Size** — 1"H x 1.6"W x 2.3"L (2.5 x 4.1 x 5.8 cm)

## What's included

- ◆ (1) USB↔USB Data Transfer with integral 6-foot (1.8-m) cable
- ◆ (1) CD-ROM containing driver and installation software
- ◆ (1) Users' manual

## Item

USB↔USB Data Transfer

## Code

**IC149A-R4**

## Why Buy From Black Box? Exceptional Value. Exceptional Tech Support. Period.

### Recognize any of these situations?

- You wait more than 30 minutes to get through to a vendor's tech support.
- The so-called "tech" can't help you or gives you the wrong answer.
- You don't have a purchase order number and the tech refuses to help you.
- It's 9 p.m. and you need help, but your vendor's tech support line is closed.

According to a survey by *Data Communications* magazine, 90% of network managers surveyed say that getting the technical support they need is extremely important when choosing a vendor. But even though network managers pay anywhere from 10 to 20% of their overall purchase price for a basic service and support contract, the technical support and service they receive falls far short of their expectations—and certainly isn't worth what they paid.

At Black Box, we guarantee the best value and the best support. You can even consult our Technical Support Experts before you buy if you need help selecting just the right component for your application.

Don't waste time and money—call Black Box today.